



Saponin of Red Ginseng Resin (Rg1, Rb1, Rg3)

1. Analytical Condition

ChroZen UHPLC System

Sample : Resin Red Ginseng (1g-->50mL)

Mobile phase : ACN : Water = Gradient

Flow rate : 0.5 mL/min

Column : BEH C18 (2.1 * 100 mm, 1.7 μ m)

Detector : UV/Vis, 203 nm

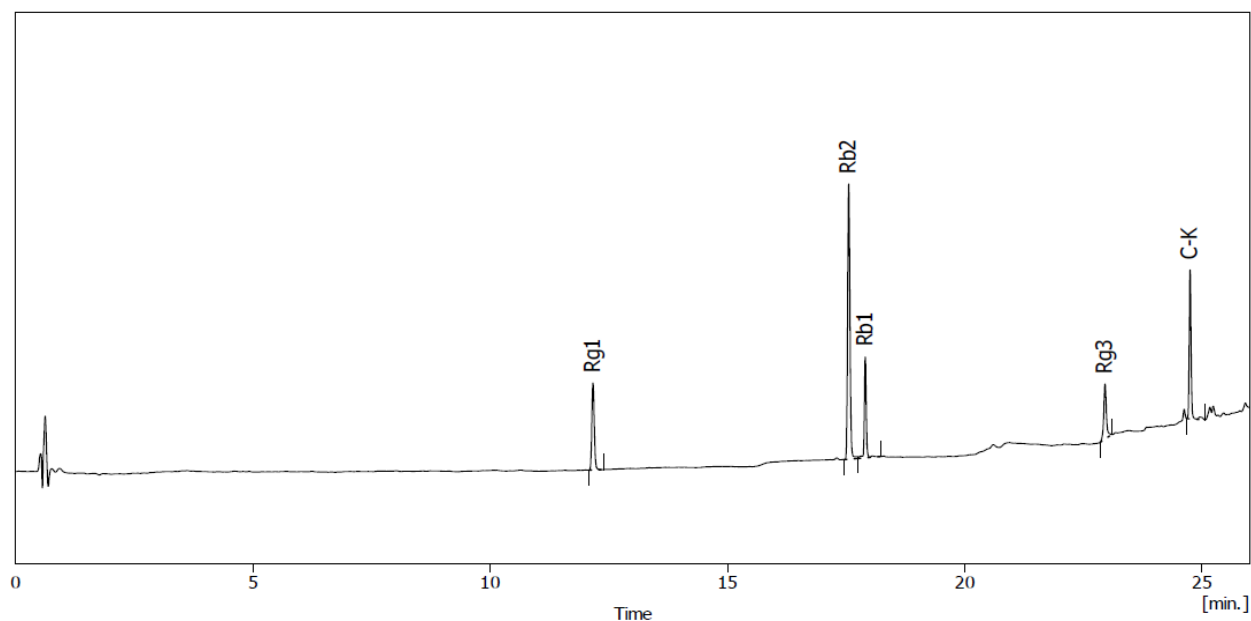
Column temp. : 35 $^{\circ}$ C

Injection volumn: 2 μ L

Time	Water	ACN
Initial	88	12
1	88	12
10	78	22
15	70	30
22	50	50
27	15	85
29	15	85
29.1	88	12

2. Chromatogram

Standard sample





2. Chromatogram

Red Ginseng Resin

